

Charming Craftsman Gem on Majestic Tree Lot

1175 Menlo Drive | Altadena



3 Bed + Den | 2 Bath | 1,563 Sq Ft | Lot Size = 8,000 sq ft

Sitting beautifully above street level in the hills of Altadena, surrounded by mature trees, this charming Craftsman home offers privacy, serenity and comfort! The covered front porch welcomes you in to the light & bright living room with bay window, cozy FP, built in bookshelves and newer windows. The dining room features floor to ceiling windows and recessed lights and opens to the updated kitchen with vaulted ceilings, granite countertops, newer wood cabinets, tile flooring with adjacent laundry area, additional storage & a side door leading outside.

The great floor plan provides for all bedrooms to be in one area of the home off the main hallway w/ vaulted ceilings and skylights and opens to the den with a built in corner entertainment center and French doors to the rear brick patio & yard. The master suite is spacious offering a sitting area with 2nd FP & built in bookshelves, a full bath with double sinks, walk in closet and French doors leading out to the lush rear yard. There are 2 other bedrooms that share a remodeled full bath with newer custom tiles and a pedestal sink.

The rear yard provides a quaint brick patio and expansive lawn area shaded by majestic trees and views of the mountains, is fully gated, and has a detached 2 car, automatic garage with built in storage shelves.

Additional features: Newly painted exterior, Central air and heat, New solid red oak hardwood floors in all public areas & hallway, Crown moldings throughout, Recessed lighting, Automatic sprinklers + much more!

A very special home in immaculate move in condition!



Nina Kirkendall
www.homesbynina.com | 626.676.6260

Chairman's Circle & Legend Award Winner

Offered at:
\$789,000

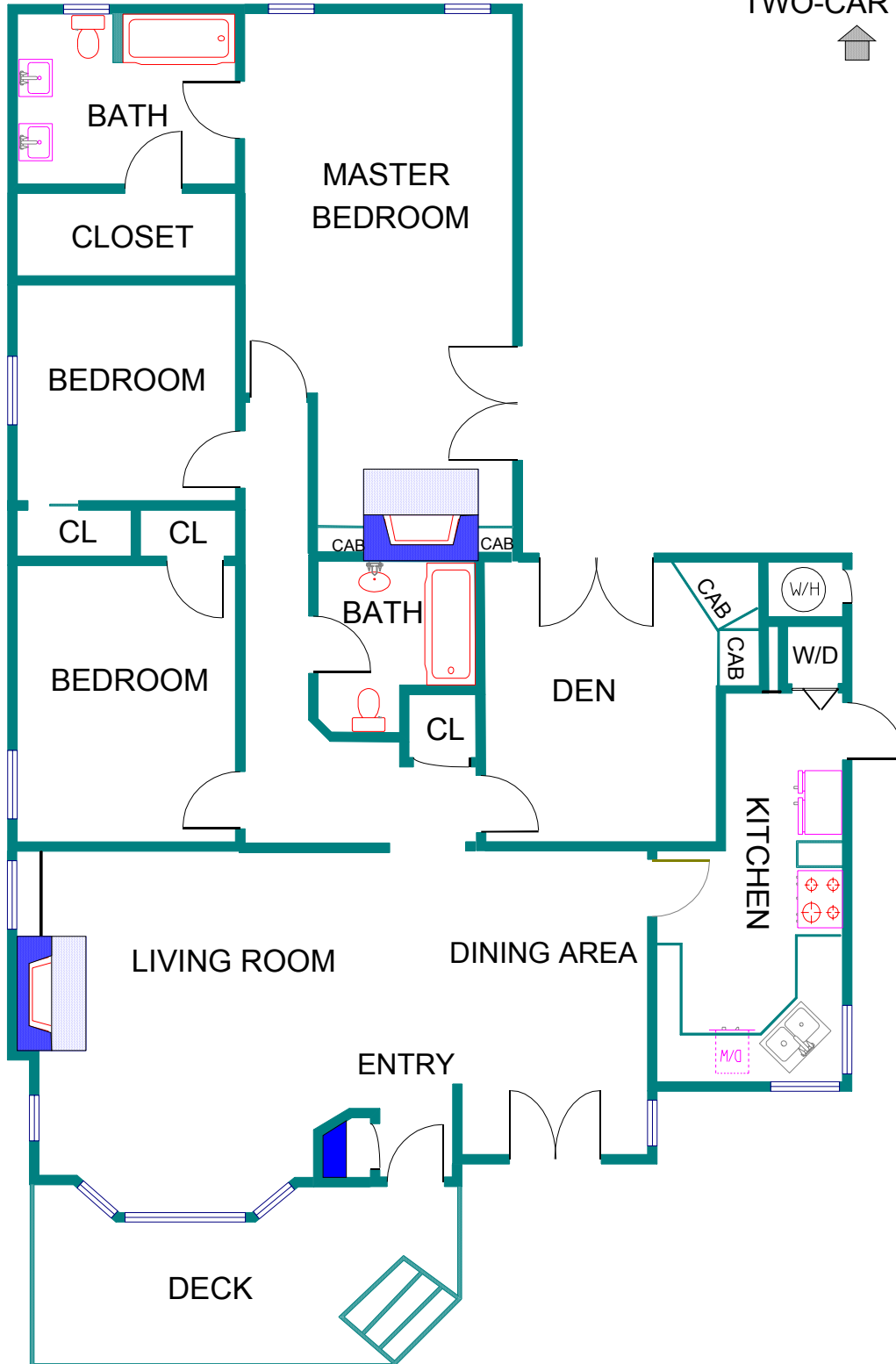
Virtual Tour at
www.homesbynina.com
www.1175menlo.com



SAN MARINO
PASADENA
SOUTH
PASADENA

1175 Menlo Drive | Altadena

TWO-CAR GARAG



FLOOR PLAN CREATED BY REST. INFORMATION DEEMED RELIABLE BUT NOT GUARANTEED. (626) 840-1717

Nina Kirkendall

SAN MARINO
PASADENA
SOUTH
PASADENA

626.676.6260