



*Charming Craftsman in Prime Madison Heights*  
662 S El Molino Avenue | Pasadena



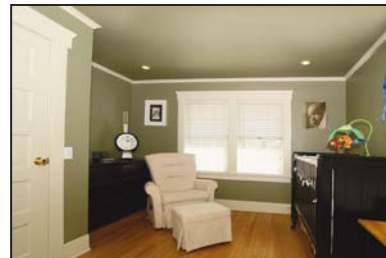
# 662 S. El Molino Ave. | Pasadena

4 bedrooms | 3 baths | 1,892 sq ft\* | 7,500 lot size

This beautifully restored and updated 2 story residence boasts character and charm! The front porch provides for relaxation and invites you in to this light and bright home with hardwood floors, crown moldings and wood detailing. The living room features a warm fireplace with built in shelving. The formal dining room can be closed off with glass folding doors and features an elegant built in buffet with glass display doors. The kitchen is updated with newer appliances, garden window, recessed lights, newer cabinetry with glass doors, and adjacent eating area with door leading to the rear yard. There are 2 bedrooms downstairs and a full hall bath to complete the first level. The second level features 2 bedrooms suites, each with ample closet space, newer carpets, and separate sink/vanity area.

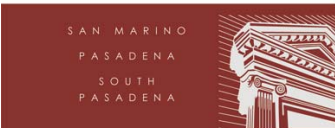
The rear yard features a large patio with new concrete pavers, grassy lawn area, and mature trees for privacy, great for entertaining or family enjoyment. There is a 2 car detached garage with newer automatic door, all new driveway with concrete pavers and built in sump pump.

*This prime Pasadena location is close to Lake Avenue shops and restaurants, Cal Tech, and provides easy access to Downtown LA...this home is NOT TO BE MISSED!*



Nina Kirkendall  
www.homesbynina.com | 626.676.6260

Chairman's Circle & Legend Award Winner



### Additional features:

- Newer roof
- Re-built chimney
- Security system
- Newer 2nd central air unit
- New exterior paint
- Newer carpeting upstairs
- Automatic sprinklers

\* per REST

Offered at:  
**\$1,049,000**



For additional information & Virtual Tour, visit:  
[www.662selmolino.com](http://www.662selmolino.com)