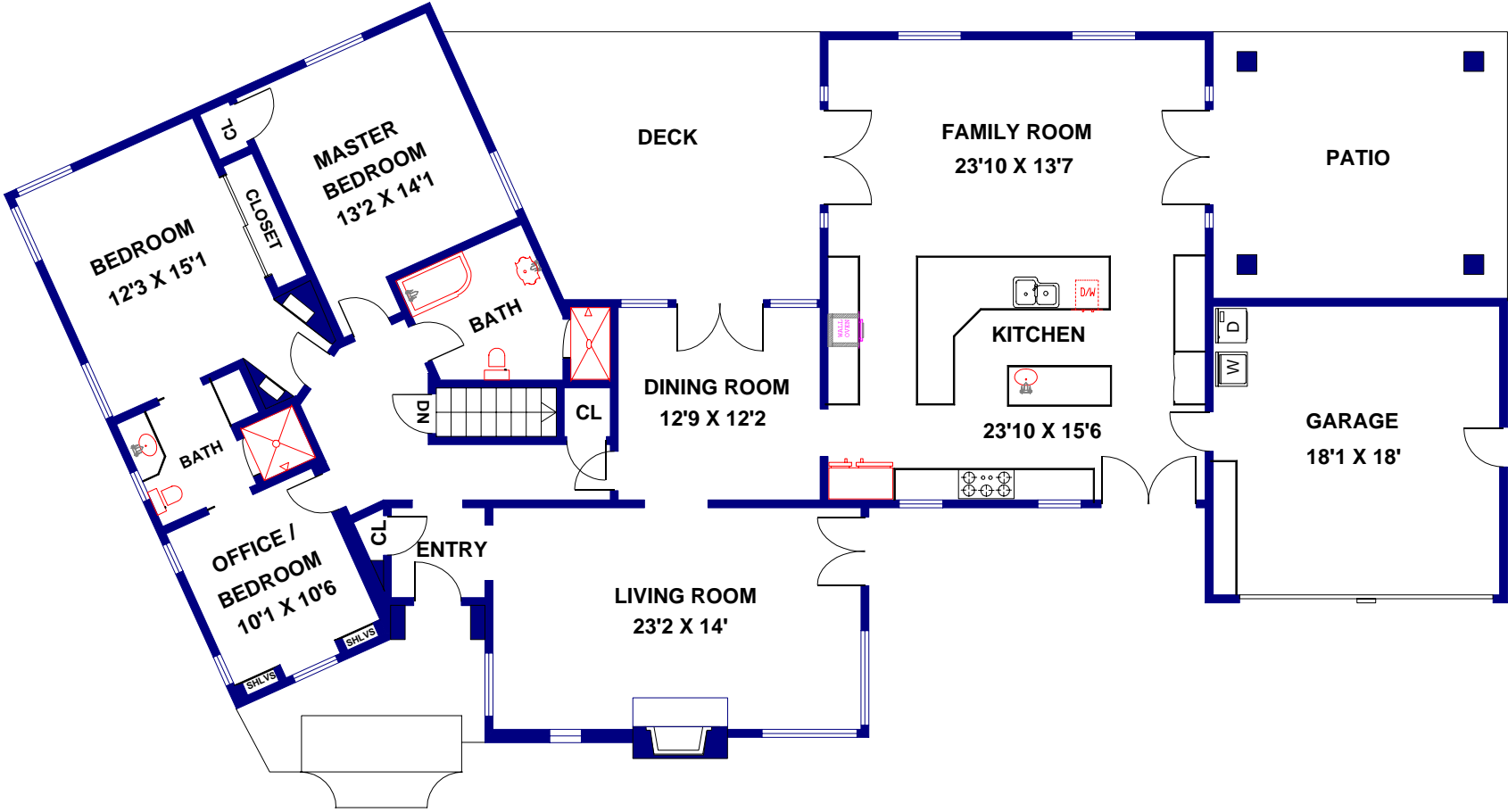


# 2335 Lorain Road | San Marino



FLOOR PLAN CREATED BY REST, INFORMATION DEEMED RELIABLE, BUT NOT GUARANTEED. (626) 840-1717

Nina Kirkendall

DRE License # 01245547

SAN MARINO • PASADENA • SOUTH PASADENA



626-676-6260